

Garrett Soil Conservation District "Conservation News"

Newsletter Contents

From the Chairman....	2
Cooperator Dinner	3
Cover Crop Information	4
NRCS News / Meet The Supervisor	5
FSA Information	6
FSA Information Cont.	7
Contact Information	8

Congratulations Green Family Farm



Garrett SCD's 2019 Cooperator of the Year

Important Dates

- Cover Crop Fall Planting and Certification Deadlines: See Page 4
- Offices Closed: October 14, November 11, 27, and December 25
- Board of Supervisor Meetings: October 15, November 19 & December 17

Fall Certification Happening Now for 2019-20 Cover Crops

Farmers must certify their cover crop with the soil conservation district within one week of planting and no later than November 5, 2019. Kill down /suppression may take place between March 1 and June 1, 2020. **Extended Season incentive payment for termination after May 1, 2020, must have signed up at time of enrollment, and notify the staff by April 15th that you are waiting until after May 1.** . District Staff will need to know the following information when certifying your cover crops:

1. Which fields were planted?
2. What was the previous crop?
3. What cover crop was planted?
4. What planting method was used?
5. What was the planting date?
6. Was manure applied ? When?
7. NEED ORIGINAL SEED TAGS SIGNED IN **BLUE INK!**



From the Chairman.... James “Smokey” Stanton



Welcome to all producers and cooperators to the Fall 2019 issue of the GSCD "Conservation News".

Congratulations to the Kenny and Deborah Green Family, the 2019 Garrett Soil Conservation Districts' Cooperator of the Year. Sixteen members of the Green family attended the Annual GSCD Cooperators Dinner held September 19 to receive award citations and a sign designating their farm as a conservation award winner. The Green Family Farm was purchased in 1949, with four generations of Greens living on or adjacent to the farm since. In 2019, the Green family farmed over 220 acres, both crops and animals. The Greens have implemented many BMP's (Best Management Practices) for water conservation, soil health, cover crops, and other management practices. Congratulations and thank you to all the Green family members!

With harvesting and seasonal preparations now underway, and the average first frost and hard freeze fast approaching, approximately mid-October in Garrett County, many producers are beginning to review this year's activities to prepare for next year. The "next season" gives the opportunity to review and plan for implementing best management practices. Garrett County farms cover approximately 90,000 acres, with 80% of our farms using 180 acres or less.

A growing management practice in agriculture often uses renting ~ whether land is being leased to someone else or is being leased from a landowner ~ to increase production. Often, land is rented without using a written lease and the arrangement is done with a handshake. Some conservation practices can take years to show a return on investment. Some landowners (the lessor), and some producers (the lessee) have strong preferences about practices that can and cannot be used, for example forest harvesting methods and application of nutrients and pesticides.

The University of Maryland Agriculture Law Education Initiative has published the "Agricultural Conservation Leasing Guide". Conservation practices are not commonly used on leased land for a variety of reasons, and the Guide can help farmers and landowners use leases as a tool to not only protect their business interests but also implement stewardship planning and conservation practices on leased land. You can download the Guide at: [https://agresearch.umd.edu/sites/agresearch.umd.edu/files/_images/uploaded/ALEI-Agricultural-Conservation-Leasing-Guide%20\(1\).pdf](https://agresearch.umd.edu/sites/agresearch.umd.edu/files/_images/uploaded/ALEI-Agricultural-Conservation-Leasing-Guide%20(1).pdf)

And finally, thank you to the all Garrett County agriculture community for your continued efforts for good stewardship of our land and water resources.

James R. "Smokey" Stanton, Chair, GSCD



Garrett SCD Board Of Supervisors

(Left to Right) William "Bill" Buckel, Katharine Dubansky, James "Smokey" Stanton, Kristen Enlow, Cameron Crawford

Garrett SCD's 30th Annual Cooperators Dinner

On September 19th, 2019 over seventy-five people gathered to recognize another year of conservation efforts in Garrett Co. It was also a night to celebrate the 2019 Cooperator of the Year - The Green Family Farm.

Congratulations

The Green Family have an operation of 50 brood herd cows along with a commercial hay business. The only time the Green's hire help is in the summer for hay making efforts, were they produce 400 round bales and 8k-10k square bales.

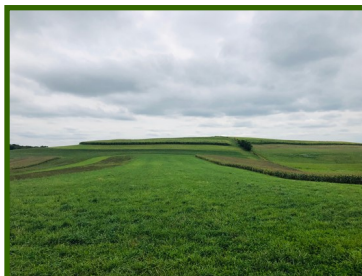


Kenny and Deborah Green have worked with the District constructing many BMP's throughout the years, as well as installing some on their own.

BMP's shown below include: (top left) Ag Waste / HUA, (top right) Stream Buffer / Livestock Exclusion Fence, (bottom left) Watering Facility, (bottom right) Contour Strip Cropping.



Heather Hutchinson recalls her visit to the farm in the middle of winter. Smile on Kenny's face is priceless. Heather presented the Secretary of Agriculture Citation.



Happy Cows!

Cover Crop Fall Certification is Upon Us

The leaves are beginning to change and temperature is beginning to drop - which can only mean one thing - fall is upon us in Garrett County. Garrett County farmers need to start thinking about certifying their cover crops for the upcoming 2019-2020 season. During the programs sign-up period held in June every year, twenty-nine applicants accounted for 3,506 acres of cover crop intended for Garrett County.

This popular grant program provides farmers with cost-share assistance to offset seed, labor and equipment costs to plant cover crops on their fields this fall to control soil erosion, reduce nutrient runoff, build healthy soils and protect water quality in streams, rivers and the Chesapeake Bay. Gov. Larry Hogan has allocated approximately \$22.5 million for Maryland's 2019-2020 Cover Crop Program.

Cover crops help protect waterways from nutrient runoff, control soil erosion and improve soil health. As they grow, cover crops recycle unused plant nutrients remaining in the soil from the preceding summer crop. Once established, they work all winter to protect fields against erosion spurred on by wind, rain, snow and ice. In addition to their water quality benefits, cover crops help build healthy soils, increase organic matter in the soil, reduce weeds and pests, and provide habitat for beneficial insects. They can even help farm fields recover more quickly from drought and extreme rainfall. Studies have shown that planting cover crops in the fall can increase yields of cash crops like corn and soybeans after only a few years.



Available to rent from Garrett SCD:
 Transpread 5.5 Ton Lime & Fertilizer
 Spreader & 1590 John Deere No-Till Drill.
 Call the office at 301-501-5886.

COVER CROP DATES TO REMEMBER

- Planted by **10/01** reported by **10/08/19**
- Planted by **10/15** reported by **10/22/19**
- Planted by **11/05** reported by **11/12/19**
- Barley must be planted by **10/15/19**
- Broadcast stalk chop method ends **10/15/19**
- Terminate cover crops between March 1 and June 20, 2020
- **Extended Season incentive payment for termination after May 1, 2020, must have signed up at time of enrollment, and notify the staff by April 15th that you are waiting until after May 1.**



Natural Resources Conservation Service News

Farm Bill Funding : Looking forward to 2020

Federal Fiscal Year 2019 concluded at the end of September, and the fall harvest will be soon complete. Fall months are one of the best times of the year to consider future plans and to assess progress on current projects.

Application dates for the 2020 Environmental Quality Incentives Program (EQIP) and other federally-funded programs have not yet been announced. Program Rules are being updated nationally for Farm Bill programs for 2020. Program applications will not be announced until these updates are finalized. Expect to see future announcements of EQIP application deadlines in the early months of 2020.

Even though it may be a few months before formal Farm Bill applications are announced, planning done this fall can better position projects for potential funding. If you are interested in making improvements to your operation, contact one of the office staff to set up a time to meet this fall. Fall is a good time to review the conservation plan or existing contract for your operation. Fall is an excellent time to assess the need for cropland practices such as grassed waterways and contour strips.

Fall is also a good time to review farm records with the Farm Service agency to ensure they are up to date with your operation. If the farm operation is managed as a legal entity, additional paperwork is necessary to establish signatory authority and land and entity ownership.

With short funding timelines, it is beneficial to have conservation planning and best management practice designs completed months before applying for funding. Consulting with potential contractors early in the year provides a better sense of contractor timelines and project costs. Federal financial assistance is flat-rate based by practice amounts, which has the benefit that reimbursement amounts are known prior to beginning construction. Advance planning will reap benefits for financial management and lending, contracting schedules, and will help get projects on the ground sooner.

To set up a meeting to discuss current or future projects, please contact us at 301-501-5886.



Helping People Help the Land | www.md.nrcs.usda.gov

USDA is an equal opportunity provider and employer.

Meet the Supervisors...

Cameron Crawford - District Supervisor

Cameron is a Garrett County native and currently resides on his family's 100+ acre farm south of Oakland with his wife, Lindsey, and their two dogs. After graduating from Frostburg State in 2015 with an accounting degree, he worked in the banking industry for five years as a commercial underwriter and loan portfolio manager, managing over \$250 million in loans. Cameron likes to spend his time working on the family farm and coaching basketball in the Landon's Library Youth Basketball League.



Farm Service Agency News

USDA Opens Signup for Market Facilitation Program

Enrollment Now Open through Dec. 6

Signup opens today for the Market Facilitation Program (MFP), a U.S. Department of Agriculture (USDA) program to assist farmers who continue to suffer from damages because of unjustified trade retaliation from foreign nations. Through MFP, USDA will provide up to \$14.5 billion in direct payments to impacted producers, part of a broader trade relief package announced in late July. The sign-up period runs through Dec. 6. MFP payments will be made to producers of certain non-specialty and specialty crops as well as dairy and hog producers.

Non-Specialty Crops

MFP payments will be made to producers of alfalfa hay, barley, canola, corn, crambe, dried beans, dry peas, extra-long staple cotton, flaxseed, lentils, long grain and medium grain rice, millet, mustard seed, oats, peanuts, rapeseed, rye, safflower, sesame seed, small and large chickpeas, sorghum, soybeans, sunflower seed, temperate japonica rice, triticale, upland cotton, and wheat. MFP assistance for 2019 crops is based on a single county payment rate multiplied by a farm's total plantings to the MFP-eligible crops in aggregate in 2019. Those per acre payments are not dependent on which of those crops are planted in 2019. A producer's total payment-eligible plantings cannot exceed total 2018 plantings. [View payment rates by county.](#)

Dairy and Hogs

Dairy producers who were in business as of June 1, 2019, will receive a per hundredweight payment on production history, and hog producers will receive a payment based on the number of live hogs owned on a day selected by the producer between April 1 and May 15, 2019.

Specialty Crops

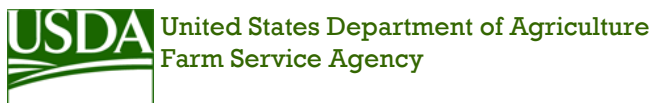
MFP payments will also be made to producers of almonds, cranberries, cultivated ginseng, fresh grapes, fresh sweet cherries, hazelnuts, macadamia nuts, pecans, pistachios, and walnuts. Each specialty crop will receive a payment based on 2019 acres of fruit or nut bearing plants, or in the case of ginseng, based on harvested acres in 2019.

More Information

Payments will be made in up to three tranches, with the second and third tranches evaluated as market conditions and trade opportunities dictate. If conditions warrant, the second and third tranches will be made in November and early January.

MFP payments are limited to a combined \$250,000 for non-specialty crops per person or legal entity. MFP payments are also limited to a combined \$250,000 for dairy and hog producers and a combined \$250,000 for specialty crop producers. However, no applicant can receive more than \$500,000. Eligible applicants must also have an average adjusted gross income (AGI) for tax years 2015, 2016, and 2017 of less than \$900,000, or 75 percent of the person's or legal entity's average AGI for those tax years must have been derived from farming and ranching. Applicants must also comply with the provisions of the Highly Erodible Land and Wetland Conservation regulations.

More information can be found on farmers.gov/mfp, including payment information and a program application.



USDA is an equal opportunity provider, employer and lender

Farm Service Agency News.... Continued

USDA Now Making Payments for New Dairy Margin Coverage Program

Income-over-feed margin for May triggers fifth payment for 2019

The U.S. Department of Agriculture's Farm Service Agency (FSA) opened enrollment for the [Dairy Margin Coverage](#) (DMC) program on June 17 and has started issuing payments to producers who purchased coverage. Producers can enroll through Sept. 20, 2019. Authorized by the 2018 Farm Bill, DMC replaces the Margin Protection Program for Dairy (MPP-Dairy). The program offers protection to dairy producers when the difference between the all-milk price and the average feed cost (the margin) falls below a certain dollar amount selected by the producer. To date, nearly 10,000 operations have signed up for the new program, and FSA has begun paying approximately \$100 million to producers for January through May.

May Margin Payment

DMC provides coverage retroactive to January 1, 2019, with applicable payments following soon after enrollment. The May 2019 income over feed cost margin was \$9.00 per hundredweight (cwt.), triggering the fifth payment for eligible dairy producers who purchase the \$9.50 level of coverage under DMC. Payments for January, February, March and April also were triggered. With the 50 percent hay blend, FSA's revised April 2019 income over feed cost margin is \$8.82 per cwt. The revised margins for January, February and March are, respectively, \$7.71, \$7.91 and \$8.66.

Coverage Levels and MPP Reimbursements

Dairy producers can choose coverage levels from \$4 up to \$9.50 at the time of signup. More than 98 percent of the producers currently enrolled have elected \$9.50 coverage on up to 95 percent of their production history.

More Information

On December 20, 2018, President Trump signed into law the 2018 Farm Bill, which provides support, certainty and stability to our nation's farmers, ranchers and land stewards by enhancing farm support programs, improving crop insurance, maintaining disaster programs and promoting and supporting voluntary conservation. FSA is committed to implementing these changes as quickly and effectively as possible, and today's updates are part of meeting that goal. For more information, visit farmers.gov [DMC webpage](#) or contact your local USDA service center. To locate your local FSA office, visit farmers.gov/service-locator.

USDA is an equal opportunity provider, employer and lender



(L-R) Michael, Mason, George, Joyce, and Billy Bishoff

Thank you
George Bishoff
 for 49 Years of Service to the
 Garrett SCD Board of Supervisors

**Garrett Soil Conservation District
1916 Maryland Highway Ste C
Mt Lake Park MD 21550**

PRST STD
US Postage Paid
Oakland, MD
Permit No. 13

PHONE NUMBERS

Service Center Main Line: 301-501-5856

FSA Direct Line: 301-501-5885

NRCS/SCD Direct Line: 301-501-5886

We are on the web and Facebook!
www.garrettscd.org and Garrett Soil Conservation District

If you would like to:

- Receive an emailed version of this newsletter or
- Would like to submit an article or
- Have an idea for an article

Please contact, **Carrie Colebank**, at
carrie.colebank@maryland.gov

Office Staff

Chad Bucklew, District Conservationist (USDA-NRCS)

Roger Kitzmiller, District Manager, Acting (MDA)

Soil Conservation Engineering Technician (MDA)

Charles "Chuck" Hayes, Soil Conservation Associate (MDA)

Chris Herbert, Soil Conservation Engineering Technician (MDA)

Jessica Aronhalt, Soil Conservationist (USDA-NRCS)

Daniel Kirby, Soil Conservation Technician (USDA-NRCS)

Vacant, Agriculture Resource Conservation Specialist (MDA)

Carrie Colebank, Administrative Assistant (SCD)

Business Hours: Monday thru Friday 8:00 am til 5:00 pm

Service Center Phone Number: 301-501-5856



1916 Maryland Highway Ste C / Mt Lake Park MD 21550

Celebrating 76 Years! 1943-2019

Board of Supervisors

James "Smokey" Stanton, Chairman

Kristen Enlow, Vice Chairman

Cameron Crawford, Treasurer

Katharine Dubansky, Vice Treasurer

William "Bill" Buckel, Member

If you are interested in learning more about becoming a supervisor or associate supervisor please contact the district office at 301-501-5886.

The Garrett Soil Conservation District (GSCD) prohibits discrimination in its programs on the basis of race, color, national origin, sex, religion, age, disability, political beliefs, and marital or familial status.